

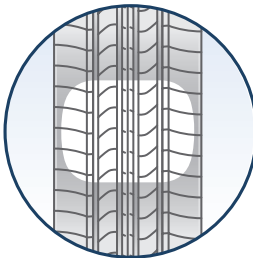
Michelin® Primacy™ MXV4®



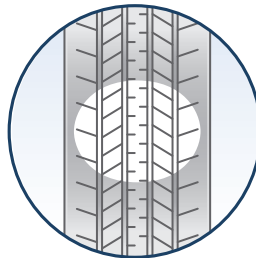
Michelin® Primacy® MXV4® tires bring the right combination of performance and luxury to a variety of vehicle types. As the newest generation of our popular line of MXV4 tires, the Primacy MXV4 helps deliver the performance and handling you would expect, along with improved ride comfort, better wet braking, and longer wear backed by a 60,000-mile manufacturer's limited warranty.

Get More Miles For Your Money*

Primacy MXV4 tires feature Advanced MaxTouch Construction™, a unique shape and design that allows for long-lasting, even treadwear, and a 60,000-mile manufacturer's limited warranty.*



With MaxTouch Construction



Without MaxTouch Construction

Get Better Control When You Need It Most*

Active Sipes alternately lock together and open as needed to provide increased biting edges that grip the road for improved, all-season handling, especially in rain and snow.*

Enjoy A Quiet, Comfortable Ride

Michelin® Comfort Control Technology™ helps deliver one of the most comfortable rides in the industry by using a computer-optimized design and precision manufacturing to offer greatly reduced vibrations and road noise.*

*Comparisons among Michelin® Performance Touring products.

NOTE: These comparisons are among Michelin® Luxury Performance Touring tires, unless specified otherwise.
Copyright © 2007 Michelin North America, Inc. All rights reserved.
MDL43150

Size	Service Desc.	Sidewall	MSPN	Rim Width Range (inches)	Section Width on Measuring Rim Width	Overall Diameter	Tread Depth (in/32nds)	Revs/Mile at 45 mph	Max. Load Single (lbs@psi)	Treadwear	Traction	Temperature	
185/65R15	88H	RRBL	13735	5.0 - 6.5	7.4 on 5.5	24.4	11.0	851	1235@44	620	A	A	Avail. 2Q
195/60R15	88H	RRBL	04329	5.5 - 7.0	7.9 on 6.0	24.2	11.0	859	1235@44	620	A	A	Avail. 2Q
195/60R15	88V	RRBL	37429	5.5 - 7.0	7.9 on 6.0	24.2	11.0	859	1235@44	620	A	A	Avail. 2Q
195/65R15	91H	RRBL	23279	5.5 - 7.0	7.9 on 6.0	25.0	11.0	832	1356@44	620	A	A	Avail. 2Q
205/60R15	91H	RRBL	23933	5.5 - 7.5	8.2 on 6.0	24.7	11.0	843	1356@44	620	A	A	Avail. 2Q
205/65R15	94H	RRBL	30373	5.5 - 7.5	8.2 on 6.0	25.5	11.0	817	1477@44	620	A	A	Avail. 2Q
205/65R15	94V	RRBL	05609	5.5 - 7.5	8.2 on 6.0	25.5	11.0	817	1477@44	620	A	A	Avail. 2Q
215/60R15	94H	RRBL	09077	6.0 - 7.5	8.7 on 6.5	25.2	11.0	827	1477@44	620	A	A	Avail. 2Q
225/60R15	96H	RRBL	04310	6.0 - 8.0	9.0 on 6.5	25.6	11.0	812	1565@44	620	A	A	Avail. 2Q
205/55R16	91H	RRBL	36597	5.5 - 7.5	8.4 on 6.5	24.9	11.0	836	1356@44	620	A	A	Avail. 2Q
205/55R16	91V	RRBL	23438	5.5 - 7.5	8.4 on 6.5	24.9	11.0	836	1356@44	620	A	A	Avail. 2Q
205/60R16	92H	RRBL	11848	5.5 - 7.5	8.2 on 6.0	25.7	11.0	810	1389@44	620	A	A	Avail. 2Q
205/60R16	92V	RRBL	68161	5.5 - 7.5	8.2 on 6.0	25.7	11.0	810	1389@44	620	A	A	Avail. 2Q
205/65R16	95H	RRBL	38851	5.5 - 7.5	8.2 on 6.0	26.5	11.0	786	1521@44	620	A	A	Avail. 2Q
215/55R16	93H	RRBL	09822	6.0 - 7.5	8.9 on 7.0	25.3	11.0	823	1433@44	620	A	A	Avail. 2Q
215/55R16	93V	RRBL	29546	6.0 - 7.5	8.9 on 7.0	25.3	11.0	823	1433@44	620	A	A	Avail. 2Q
215/60R16	95H	RRBL	20653	6.0 - 7.5	8.7 on 6.5	26.1	11.0	796	1521@44	620	A	A	Avail. 2Q
215/60R16	95V	RRBL	13397	6.0 - 7.5	8.7 on 6.5	26.1	11.0	796	1521@44	620	A	A	Avail. 2Q
225/60R16	98H	RRBL	73257	6.0 - 8.0	9.0 on 6.5	26.6	11.0	782	1653@44	620	A	A	Avail. 2Q
225/60R16	98V	RRBL	30137	6.0 - 8.0	9.0 on 6.5	26.6	11.0	782	1653@44	620	A	A	Avail. 2Q
225/65R16	100H	RRBL	03741	6.0 - 8.0	9.0 on 6.5	27.5	11.0	757	1764@44	620	A	A	Avail. 2Q
235/60R16	100H	RRBL	15861	6.5 - 8.5	9.4 on 7.0	27.1	11.0	768	1764@44	620	A	A	Avail. 2Q
215/50R17	91H	RRBL	24850	6.0 - 7.5	8.9 on 7.0	25.5	11.0	815	1356@44	620	A	A	Avail. 2Q
215/50R17	91V	RRBL	12766	6.0 - 7.5	8.9 on 7.0	25.5	11.0	815	1356@44	620	A	A	Avail. 2Q
215/55R17	94H	RRBL	38889	6.0 - 7.5	8.9 on 7.0	26.3	11.0	791	1477@44	620	A	A	Avail. 2Q
225/45R17	91H	RRBL	20741	7.0 - 8.5	8.9 on 7.5	25.0	11.0	833	1356@44	620	A	A	Avail. 2Q
225/55R17	97H	RRBL	06852	6.0 - 8.0	9.2 on 7.0	26.8	11.0	777	1609@44	620	A	A	Avail. 2Q
225/55R17	97V	RRBL	02647	6.0 - 8.0	9.2 on 7.0	26.8	11.0	777	1609@44	620	A	A	Avail. 2Q
235/55R17	99H	RRBL	29294	6.5 - 8.5	9.6 on 7.5	27.2	11.0	766	1709@44	620	A	A	Avail. 2Q
225/55R18	98H	RRBL	09088	6.0 - 8.0	9.2 on 7.0	27.8	11.0	749	1653@44	620	A	A	Avail. 2Q
225/60R18	100H	RRBL	22328	6.0 - 8.0	9.0 on 6.5	28.6	11.0	727	1764@44	620	A	A	Avail. 2Q
245/45R18	96V	RRBL	19549	7.5 - 9.0	9.6 on 8.0	26.7	11.0	780	1565@44	620	A	A	Avail. 2Q

- The dimensions shown are average values for tires measured on specified measuring rim width. Individual tires may vary from data shown.
- Section width varies approximately 0.2" (5mm) for every 0.5" change in rim width.

WARNING: Serious or fatal injury may result from tire failure due to underinflation or overloading. To ensure correct air pressure and vehicle load, refer to vehicle owners manual or tire information placard on the vehicle. Serious injury or death may result from explosion of tire/rim assembly due to improper mounting. Only tire professionals should mount tires, and they should never inflate beyond 40 psi to seat the beads. Before mixing types of tires in any configuration on any vehicle, be sure to check the vehicle owners manual for its recommendations.

DANGER: Never mount a 16" diameter tire on a 16.5" rim.
DANGER: Never mount a 17" diameter tire on a 17.5" rim.

Inflation pressure increase must not exceed the maximum pressure branded on the tire sidewall. When a customer requests a replacement tire with a lower speed rating than the original equipment tire, you must clearly communicate to him or her that the handling of the vehicle may be different and that its maximum speed capability is limited to that of the lowest speed-rated tire on the vehicle. Exceeding the lawful speed limit is neither recommended nor endorsed.

For high-speed driving, additional inflation pressure and possibly reduced tire loading and/or upsizing is required. In the absence of specific recommendations by the vehicle manufacturer, use the following guidelines based on those in the European Tyre and Rim Technical Organization Standards Manual.

For speeds over 160 km/h (100 mph), load and inflation must be adjusted according to the table below.

H-Speed Rated Sizes:

Maximum Speed (mph)	100	106	112	118	124	130
Inflation Increase (psi)	0	1	2	3	4	5
Load Capacity (% of max.)	100	100	100	100	100	100

V-Speed Rated Sizes:

Maximum Speed (mph)	100	106	112	118	124	130	136	143	149
Inflation Increase (psi)	0	1	2	3	4	5	5	5	5
Load Capacity (% of max)	100	100	100	100	100	100	97	94	91

