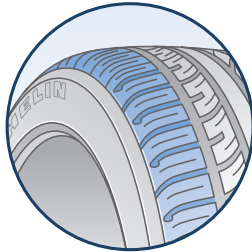


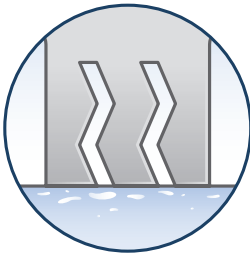
# Michelin® Pilot® MXM4®



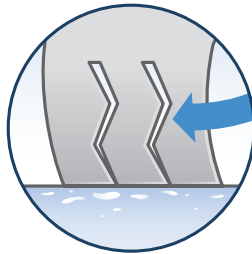
Michelin® Pilot® MXM4® tires help provide drivers of premium luxury vehicles a sporty balance of handling and all-season traction, combined with a long-lasting tread that helps provide a quiet, comfortable ride. Michelin Pilot MXM4 tires offer plenty of comfort, but not at the expense of performance.



European Performance Profile



Interlocking Sipes



## Feel Every Curve

A European performance profile, featuring a rounder shoulder, is designed to provide progressive, predictable cornering, letting you push your vehicle to the edges of its performance capabilities.

## Enjoy A Quiet, Comfortable Ride

Michelin® Comfort Control Technology™ helps deliver one of the most comfortable rides in the industry by using computer-optimized design and precision manufacturing to offer greatly reduced vibrations and road noise.

## Get Better Control When You Need It Most\*

Special interlocking sipes, that are both variable width and full depth, create biting edges, helping to give you more confidence whether it's snowing or raining.

\*Comparisons among Michelin® Performance Touring products.

NOTE: These comparisons are among Michelin® Luxury Performance Touring tires, unless specified otherwise.  
Copyright © 2007 Michelin North America, Inc. All rights reserved.  
MDL41065

Size	Service Desc.	Sidewall	MSPN	Rim Width Range (inches)	Section Width on Measuring Rim Width	Overall Diameter	Tread Depth (in/2nds)	Revs/Mile at 45 mph	Max. Load Single (lbs@psi)	Treadwear	Traction	Temperature	Original Equipment
P205/55R16	89V	RRBL	70184	5.5 - 7.5	8.3 on 6.5	24.9	10.0	834	1259@51	300	A	A	AC, HO
215/55R16	93H	RRBL	70695	6.0 - 7.5	8.9 on 7.0	25.2	10.0	825	1433@51	300	A	A	AU, V
215/55R16/XL	97H	RRBL	88991	6.0 - 7.5	8.9 on 7.0	25.3	10.0	823	1609@50	300	A	A	VW
225/50R16	92H	RRBL	35385	6.0 - 8.0	9.2 on 7.0	24.9	10.0	836	1389@51	300	A	A	
P225/55R16	94V	RRBL	54929	6.0 - 8.0	9.0 on 7.0	25.8	10.0	811	1477@51	300	A	A	AC
225/55R16	95H	RRBL	70341	6.0 - 8.0	9.3 on 7.0	25.8	10.0	806	1521@51	300	A	A	BM, V
225/55R16/XL	99H	RRBL	16365	6.0 - 8.0	9.3 on 7.0	25.8	10.0	806	1709@50	300	A	A	AU
225/60R16	98H	RRBL	18145	6.0 - 8.0	9.0 on 6.5	26.6	10.0	782	1653@51	300	A	A	
225/60R16	98V	RRBL	18839	6.0 - 8.0	9.0 on 6.5	26.6	10.0	782	1653@51	300	A	A	
235/60R16	100H	RRBL	02371	6.5 - 8.5	9.4 on 7.0	27.1	10.0	768	1764@51	300	A	A	
205/50R17/XL	93V	RRBL	89515	5.5 - 7.5	8.4 on 6.5	25.1	10.0	828	1433@50	300	A	A	V
215/45R17	87V	RRBL	40315	7.0 - 8.0	8.3 on 7.0	24.6	9.0	845	1201@44	300	A	A	HY
P215/50R17	87V	RRBL	38977	7.0 - 8.0	8.4 on 7.0	24.7	10.0	845	1201@51	300	A	A	AC
P215/45R17	87V	RRBL	16545	7.0 - 8.0	8.4 on 7.0	24.7	10.0	845	1201@51	300	A	A	HO
P215/50R17	90V	RRBL	26017	6.0 - 7.5	8.7 on 7.0	25.5	9.5	819	1323@44	300	A	A	K
215/50R17	91H	RRBL	02122	6.0 - 7.5	8.9 on 7.0	25.5	10.0	815	1356@51	300	A	A	
P215/50R17/XL	93V	RRBL	88482	6.0 - 7.5	8.7 on 7.0	25.5	10.0	819	1433@41	300	A	A	AC, DC, HO, MA
215/55R17	94V	RRBL	12381	6.0 - 7.5	8.9 on 7.0	26.3	10.0	791	1477@51	300	A	A	
225/45R17	90H	RRBL	50248	7.0 - 8.5	8.9 on 7.5	24.8	10.0	844	1323@51	300	A	A	V, VW
225/45R17	91H	RRBL	84377	7.0 - 8.5	8.9 on 7.5	24.8	9.5	838	1356@51	300	A	A	VW
225/45R17/XL	94H	RRBL	59428	7.0 - 8.5	8.9 on 7.5	25.0	10.0	838	1477@50	300	A	A	VW
P225/50R17	93V	RRBL	87610	6.0 - 8.0	9.2 on 7.0	25.9	10.0	803	1433@51	300	A	A	HY
P225/50R17	93V	RRBL	33284	6.0 - 8.0	9.1 on 7.0	25.9	10.0	800	1433@44	300	A	A	F
225/50R17	94V	RRBL	59993	6.0 - 8.0	9.6 on 7.0	25.9	10.0	803	1477@51	300	A	A	V
P225/55R17	95V	RRBL	79066	6.0 - 8.0	9.2 on 7.0	26.7	10.0	776	1521@35	300	A	A	DC
225/55R17	97H	RRBL	27610	6.0 - 8.0	9.2 on 7.0	26.8	10.0	777	1609@51	300	A	A	
P235/45R17	93W	RRBL	39023	7.5 - 9.0	9.6 on 8.0	25.6	9.0	814	1433@44	300	A	A	AC
235/45R17	94H	RRBL	81652	7.5 - 9.0	9.3 on 8.0	25.4	10.0	820	1477@51	300	A	A	AU
235/45R17	94V	RRBL	21365	7.5 - 9.0	9.3 on 8.0	25.4	10.0	820	1477@51	300	A	A	
235/45R17/XL	97H	RRBL	05103	7.5 - 9.0	9.3 on 8.0	25.4	10.0	820	1609@44	300	A	A	VW
P235/50R17	95V	RRBL	65211	6.5 - 8.5	9.4 on 7.5	26.3	10.0	785	1521@44	300	A	A	F, GM
P235/50R17	95W	RRBL	80928	6.5 - 8.5	9.4 on 7.5	26.3	9.0	796	1521@44	300	A	A	F
235/50R17	96H	RRBL	54891	6.5 - 8.5	9.4 on 7.5	26.3	10.0	797	1565@44	300	A	A	J
235/55R17/XL	103H	RRBL	62105	6.5 - 8.5	9.7 on 7.5	27.2	10.0	766	1929@50	300	A	A	VW
235/55R17	98W	RRBL	69362	7.0 - 8.5	9.8 on 7.5	27.0	10.0	769	1653@44	300	A	A	GM
235/55R17	99H *	RRBL ZP	84765	7.0 - 8.5	9.8 on 7.5	27.3	10.0	761	1709@51	300	A	A	BM
235/55R17	99H *	RRBL	99916	6.5 - 8.5	9.9 on 8.0	27.2	9.5	769	1709@51	300	A	A	BM
245/45R17	95H	RRBL	97946	7.5 - 9.0	9.6 on 8.0	25.7	10.0	810	1521@51	300	A	A	MB
245/45R17/XL	99H	RRBL	27219	7.5 - 9.0	9.6 on 8.0	25.7	10.0	810	1709@50	300	A	A	AU
P245/50R17	98V	RRBL	98525	7.0 - 8.5	10.0 on 7.5	26.7	10.0	779	1653@51	300	A	A	AC
P255/45R17	98V	RRBL	85527	8.0 - 9.5	10.0 on 8.5	26.1	10.0	798	1653@44	300	A	A	GM
P225/45R18	91V	RRBL	75447	7.0 - 8.5	8.9 on 7.5	25.9	10.0	802	1356@44	300	A	A	
P225/45R18	91V	RRBL	38931	7.0 - 8.5	8.9 on 7.5	25.9	10.0	802	1356@44	300	A	A	
P235/45R18	94V	RRBL	79598	7.5 - 9.0	9.3 on 8.0	26.5	10.0	790	1478@35	300	A	A	I
235/50R18	97H *	RRBL	83609	6.5 - 8.5	9.9 on 8.0	27.2	9.5	768	1609@51	300	A	A	BM
235/50R18	97H	RRBL	86861	6.5 - 8.5	9.4 on 7.5	27.5	10.0	759	1609@44	300	A	A	J
P235/50ZR18	97W	RRBL ZP	78756	6.5 - 8.5	9.5 on 8.0	27.4	10.0	756	1609@51	300	A	A	GM
P235/50ZR18	97W	RRBL	91426	6.5 - 8.5	9.7 on 7.5	27.3	9.5	761	1609@51	300	A	A	GM
P235/55R18	99V	RRBL	55594	6.5 - 8.5	9.7 on 8.0	28.4	9.0	731	1709@44	300	A	A	DC
P235/55R18	99V	RRBL	34331	6.5 - 8.5	9.3 on 7.0	28.5	9.5	731	1709@44	300	A	A	AC
P235/60R18	102V	RRBL	94200	6.5 - 9.0	9.5 on 7.0	29.0	10.0	723	1874@44	300	A	A	GM, V
245/40R18	93V MO	RRBL	33595	8.0 - 9.5	9.8 on 8.5	25.7	10.0	809	1433@51	300	A	A	MB
245/40R18/XL	97H	RRBL	22783	8.0 - 9.5	9.8 on 8.5	25.7	10.0	809	1609@50	300	A	A	AU
P245/45R18	96V	RRBL	46579	7.5 - 9.0	9.2 on 8.0	26.9	10.0	775	1565@44	300	A	A	I
245/50R18	100V	RRBL	50059	7.0 - 8.5	10.0 on 7.5	27.7	10.0	752	1764@51	300	A	A	
255/45R18/XL	103H	RRBL	92199	8.0 - 9.5	10.0 on 8.5	27.0	10.0	769	1929@50	300	A	A	VW
255/45R18	99H MO	RRBL	14409	8.0 - 9.5	10.0 on 8.5	27.1	10.0	769	1709@51	300	A	A	MB
P255/45ZR18	99W	RRBL	63035	8.0 - 9.5	10.0 on 8.5	27.1	10.0	769	1709@51	300	A	A	GM
P255/55R18	104V	RRBL	51820	7.0 - 9.0	10.4 on 8.0	29.0	10.0	717	1984@44	300	A	A	GM
265/35R18/XL	97V MO	RRBL	38507	9.0 - 10.5	10.7 on 9.5	25.3	10.0	822	1609@50	300	A	A	MB
275/35R18	95V MO	RRBL	42370	9.0 - 11.0	10.9 on 9.5	25.6	10.0	814	1521@51	300	A	A	MB
P235/55R19	101H	RRBL	76158	6.5 - 8.5	9.4 on 7.5	29.1	10.5	717	1819@44	300	A	A	DC
245-680R460A	102V	RRBL PAX	97209	9.3 - 10.0	9.7 on 9.3	26.8	10.0	779	1874@44	300	A	A	AC

Service Description Key: \* = BMW, MO = Mercedes-Benz  
 Original Equipment Key: AC = Acura, AU = Audi, BM = BMW, DC = DaimlerChrysler, F = Ford, GM = General Motors, HO = Honda, HY = Hyundai, I = Infiniti, J = Jaguar, MB = Mercedes-Benz, V = Volvo, VW = Volkswagen

XL = Extra Load

1. The dimensions shown are average values for tires measured on specified measuring rim width. Individual tires may vary from data shown.
2. Section width varies approximately 0.2" (5mm) for every 0.5" change in rim width.

**WARNING:** Serious or fatal injury may result from tire failure due to underinflation or overloading. To ensure correct air pressure and vehicle load, refer to vehicle owners manual or tire information placard on the vehicle. Serious injury or death may result from explosion of tire/rim assembly due to improper mounting. Only tire professionals should mount tires, and they should never inflate beyond 40 psi to seat the beads. Before mixing types of tires in any configuration on any vehicle, be sure to check the vehicle owners manual for its recommendations.

**DANGER:** Never mount a 16" diameter tire on a 16.5" rim.  
**DANGER:** Never mount a 17" diameter tire on a 17.5" rim.

Inflation pressure increase must not exceed the maximum pressure branded on the tire sidewall. When a customer requests a replacement tire with a lower speed rating than the original equipment tire, you must clearly communicate to him or her that the handling of the vehicle may be different and that its maximum speed capability is limited to that of the lowest speed-rated tire on the vehicle. Exceeding the lawful speed limit is neither recommended nor endorsed.

For high-speed driving, additional inflation pressure and possibly reduced tire loading and/or upsizing is required. In the absence of specific recommendations by the vehicle manufacturer, use the following guidelines based on those in the European Tyre and Rim Technical Organization Standards Manual.

For speeds over 160 km/h (100 mph), load and inflation must be adjusted according to the table below.

**H-Speed Rated Sizes:**

Maximum Speed (mph)	100	106	112	118	124	130
Inflation Increase (psi)	0	1	2	3	4	5
Load Capacity (% of max.)	100	100	100	100	100	100

**V-Speed Rated Sizes:**

Maximum Speed (mph)	100	106	112	118	124	130	136	143	149
Inflation Increase (psi)	0	1	2	3	4	5	5	5	5
Load Capacity (% of max)	100	100	100	100	100	100	97	94	91

**W-Speed Rated Sizes:**

Maximum Speed (mph)	118	124	130	136	143	149	155	161	168
Inflation Increase (psi)	0	1.5	3	4.5	6	7.5	7.5	7.5	7.5
Load Capacity (% of max)	100	100	100	100	100	100	95	90	85



