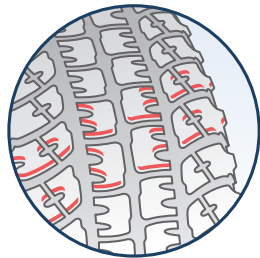




Michelin® LTX® A/T² tires help deliver the grip and durability you would expect from a rugged off-road tire, without compromising the on-road comfort and handling you would expect from a Michelin® tire.



Biting Edges™

Take The Road Less Traveled

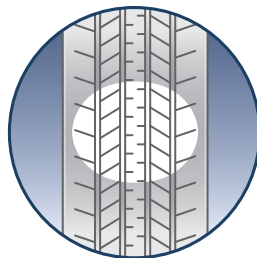
Michelin Biting Edges™ — notched blocks in the tread pattern — dig into nearly any surface for better off-road traction on dirt, mud, gravel, and wet grass.

Get More Miles For Your Money*

MaxTouch Construction™ helps deliver the longest tread life in its class†, while a third steel belt deliver the durability to take on the toughest jobs.



With MaxTouch Construction™



Without MaxTouch Construction™

Legendary Michelin Ride

Michelin® Comfort Control Technology™ helps deliver a more comfortable ride than the competition** by using a computer-optimized design and precision manufacturing to offer greatly reduced vibrations and road noise.

*Based on internal development tire wear test results for LT245/75R16 vs. Goodyear Wrangler SA and Bridgestone Dueler A/T Revo. †Wear test results for LT245/75R16 on Chevy Tahoe vs. Bridgestone Dueler A/T Revo and Wrangler SA. **Based on internal subjective comfort and noise test results vs. Goodyear Wrangler SA and Bridgestone Dueler A/T Revo.

Size	Service Desc.	Sidewall	MSPN	Rim Width Range (inches)	Section Width on Measuring Rim Width	Overall Diameter	Tread Depth (in/32nds)	Revs/Mile at 45 mph	Max. Load Single (lbs@psi)	Treadwear	Traction	Temperature	
P235/75R15/XL	108S	ORWL	35961	6.0 - 8.0	9.25 on 6.5	28.86	14.5	721	1985@50*	500	A	B	Avail. 3Q
P235/70R16	104S	ORWL	28909	6.0 - 8.0	9.45 on 7.0	28.98	14.5	718	1804@44*	500	A	B	Avail. 3Q
P245/70R16	106S	ORWL	16025	6.5 - 8.0	9.76 on 7.0	29.53	14.5	704	1904@44*	500	A	B	Avail. 3Q
P245/75R16	109S	ORWL	02399	6.5 - 8.0	9.76 on 7.0	30.47	14.5	683	2065@44*	500	A	B	Avail. 3Q
P255/70R16	109S	ORWL	39825	6.5 - 8.5	10.24 on 7.5	30.08	14.5	691	2065@44*	500	A	B	Avail. 3Q
P265/70R16	111S	ORWL	20821	7.0 - 9.0	10.71 on 8.0	30.63	14.5	679	2185@44*	500	A	B	Avail. 3Q
P265/75R16	114S	ORWL	10825	7.0 - 9.0	10.51 on 7.5	31.65	14.5	657	2365@44	500	A	B	Avail. 3Q
P235/65R17	103S	ORWL	98833	6.5 - 8.5	9.45 on 7.0	29.06	14.5	716	1754@44*	500	A	B	Avail. 3Q
P245/65R17	105S	ORWL	89576	7.0 - 8.5	9.76 on 7.0	29.53	14.5	704	1854@44*	500	A	B	Avail. 3Q
P245/70R17	108S	ORWL	19436	6.5 - 8.0	9.76 on 7.0	30.55	14.5	681	2005@44*	500	A	B	Avail. 3Q
P265/65R17	110S	ORWL	16294	7.5 - 9.5	10.71 on 8.0	30.55	14.5	681	2125@44*	500	A	B	Avail. 3Q
P265/70R17	113S	ORWL	38405	7.0 - 9.0	10.71 on 8.0	31.65	14.5	657	2305@44	500	A	B	Avail. 3Q
P265/60R18	109T	ORWL	16109	7.0 - 9.5	10.71 on 8.0	30.51	14.5	682	2065@44*	500	A	B	Avail. 3Q
P275/65R18	114T	ORWL	54364	7.5 - 9.5	10.98 on 8.0	32.09	14.5	648	2365@44	500	A	B	Avail. 3Q
P275/60R20	114S	BSW	36429	7.5 - 9.5	10.98 on 8.0	32.99	14.5	630	2365@44	500	A	B	Avail. 3Q
31x10.50R15/C	109R	ORWL	10655	7.0 - 9.0	10.55 on 8.5	30.51	14.5	682	2270@50				Avail. 3Q
LT215/85R16/E	115/112R	BSW	03321	5.5 - 7.0	8.5 on 6.0	30.39	17.5	684	2680@80				Avail. 3Q
LT225/75R16/E	115/112R	BSW	33371	6.0 - 7.0	8.78 on 6.0	29.29	17.5	710	2680@80				Avail. 3Q
LT235/85R16/E	120/116R	BSW	03287	6.0 - 7.5	9.25 on 6.5	31.73	17.5	656	3042@80				Avail. 3Q
LT245/75R16/E	120/116R	BSW	38953	6.5 - 8.0	9.76 on 7.0	30.47	17.5	683	3042@80				Avail. 3Q
LT245/75R16/E	120/116R	ORWL	33367	6.5 - 8.0	9.76 on 7.0	30.47	17.5	683	3042@80				Avail. 3Q
LT265/75R16/E	120/116R	ORWL	38691	7.0 - 8.0	10.51 on 7.5	31.65	17.5	657	3415@80				Avail. 3Q
LT265/75R16/E	123/120R	BSW	26117	7.0 - 8.0	10.51 on 7.5	31.65	17.5	657	3415@80				Avail. 3Q
LT285/75R16/E	126/123R	ORWL	13380	7.5 - 9.0	11.26 on 8.0	32.83	17.5	634	3750@80				Avail. 3Q
LT245/70R17/E	121/118R	ORWL	27609	6.5 - 7.5	9.76 on 7.0	31.5	17.5	660	3195@80				Avail. 3Q
LT265/70R17/E	121/118R	ORWL	01027	7.0 - 8.5	10.71 on 8.0	31.65	17.5	657	3195@80				Avail. 3Q
LT285/70R17/D	121/118R	ORWL	33771	7.5 - 9.0	11.5 on 8.5	32.76	17.5	635	3195@65				Avail. 3Q
LT275/65R18/E	123/120R	ORWL	84279	7.5 - 9.0	10.98 on 8.0	32.09	17.5	648	3415@80				Avail. 3Q
LT275/70R18/E	125/122R	ORWL	22721	7.0 - 8.5	10.98 on 8.0	33.19	17.5	627	3640@80				Avail. 3Q
LT285/65R18/E	125/122R	ORWL	91966	8.0 - 10.0	11.5 on 8.5	32.56	17.5	639	3640@80				Avail. 3Q
LT275/65R20/E	126/123R	ORWL	21427	7.5 - 9.5	10.98 on 8.0	34.09	17.5	610	3750@80				Avail. 3Q
LT285/55R20/D	122/119R	BSW	42442	8.0 - 10.0	11.69 on 9.0	32.36	17.5	643	3305@80				Avail. 3Q

XL = Extra Load

* Passenger sizes used in Light Truck/SUV applications have reduced load capacity. This will differ from the maximum load branded on the tire sidewall. Government UTQG Ratings do not apply to light truck-sized tires.

- The dimensions shown are average values for tires measured on specified measuring rim width. Individual tires may vary from data shown.
- Section width varies approximately 0.2" (5mm) for every 0.5" change in rim width.

WARNING: Serious or fatal injury may result from tire failure due to underinflation or overloading. To ensure correct air pressure and vehicle load, refer to vehicle owners manual or tire information placard on the vehicle. Serious injury or death may result from explosion of tire/rim assembly due to improper mounting. Only tire professionals should mount tires, and they should never inflate beyond 40 psi to seat the beads. Before mixing types of tires in any configuration on any vehicle, be sure to check the vehicle owners manual for its recommendations.

DANGER: Never mount a 16" diameter tire on a 16.5" rim.
 DANGER: Never mount a 17" diameter tire on a 17.5" rim.

Inflation pressure increase must not exceed the maximum pressure branded on the tire sidewall. When a customer requests a replacement tire with a lower speed rating than the original equipment tire, you must clearly communicate to him or her that the handling of the vehicle may be different and that its maximum speed capability is limited to that of the lowest speed-rated tire on the vehicle. Exceeding the lawful speed limit is neither recommended nor endorsed.

For high-speed driving, additional inflation pressure and possibly reduced tire loading and/or upsizing is required. In the absence of specific recommendations by the vehicle manufacturer, use the following guidelines based on those in the European Tyre and Rim Technical Organization Standards Manual.

For speeds over 160 km/h (100 mph), load and inflation must be adjusted according to the table below.

S-Speed Rated Sizes:

Maximum Speed (mph)	100	106	112
Inflation Increase (psi)	0	1	2
Load Capacity (% of max.)	100	100	100

T-Speed Rated Sizes:

Maximum Speed (mph)	100	106	112	118
Inflation Increase (psi)	0	1	2	3
Load Capacity (% of max.)	100	100	100	100

