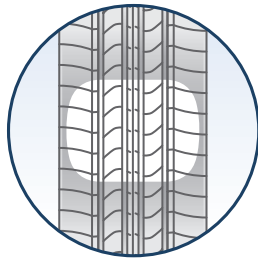


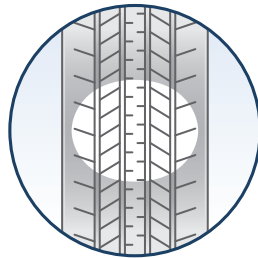


Our premiere passenger car and minivan tire, the Michelin® *HydroEdge*® tire offers drivers an uncompromising level of confidence, comfort, performance and lasting wear life.

This tire carries a 90,000-mile limited warranty*
*See warranty book for details.



With MaxTouch Construction™



Without MaxTouch Construction™

Get More Miles For Your Money

HydroEdge® tires feature MaxTouch Construction,™ a unique shape and design that allows for long-lasting, even treadwear. In fact, *HydroEdge* tires last up to 33,000 miles longer than the competition due to even wear.*

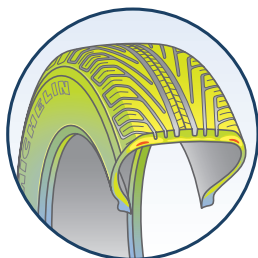
Feel Confidence And Control

A silica-based compound creates a sure-grip tread face, helping *HydroEdge* tires stop up to 14 feet shorter in wet weather conditions versus the competition.*

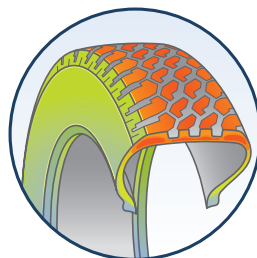
Go Farther With Each Tank Of Gas*

EnergySaver Construction™ helps deliver excellent fuel efficiency by requiring less effort from your engine.

*Compared to Goodyear Assurance product line.



With EnergySaver Construction™



Without EnergySaver Construction™

Size	Service Desc.	Sidewall	MSPN	Rim Width Range (inches)	Section Width on Measuring Rim Width	Overall Diameter	Tread Depth (in/32nds)	Revs/Mile at 45 mph	Max. Load Single (lbs@psi)	Treadwear	Traction	Temperature
P185/65R14	85T	BSW	52599	5.0 - 6.5	7.5 on 5.5	23.3	11.0	893	1124@44	800	A	B
P185/70R14	87T	BSW	86134	4.5 - 6.0	7.6 on 5.5	24.0	11.0	867	1201@44	800	A	B
P195/70R14	90T	BSW	49877	5.0 - 6.5	8.1 on 6.0	24.6	11.0	846	1312@44	800	A	B
P185/65R15	86T	BSW	90466	5.0 - 6.5	7.6 on 5.5	24.3	11.0	856	1168@44	800	A	B
P195/60R15	87T	BSW	68126	5.5 - 7.0	8.0 on 6.0	24.0	11.0	867	1190@44	800	A	B
P195/65R15	89T	BSW	91261	5.5 - 7.0	8.0 on 6.0	24.7	11.0	842	1279@44	800	A	B
P205/60R15	90T	BSW	85568	5.5 - 7.5	8.3 on 6.0	24.5	11.0	849	1301@44	800	A	B
P205/65R15	92T	BSW	84218	5.5 - 7.5	8.3 on 6.0	25.3	11.0	822	1400@44	800	A	B
P205/70R15	95T	BSW	40433	5.0 - 7.0	8.4 on 6.0	26.1	11.0	797	1499@44	800	A	B
P215/60R15	93T	BSW	84693	6.0 - 7.5	8.9 on 6.5	25.0	11.0	832	1411@44	800	A	B
P215/65R15	95T	BSW	94279	6.0 - 7.5	8.8 on 6.5	25.8	11.0	806	1510@44	800	A	B
215/70R15	98T	BSW	15059	5.5 - 7.0	8.9 on 6.5	26.6	11.0	782	1620@44	800	A	B
P205/65R16	89T	BSW	41008	5.5 - 7.5	8.4 on 6.5	24.8	11.0	839	1279@44	800	A	B
P205/65R16	94T	BSW	58544	5.5 - 7.5	8.4 on 6.0	26.3	11.0	791	1477@44	800	A	B
P215/55R16	91T	BSW	46677	6.0 - 7.5	8.9 on 7.0	25.1	11.0	829	1356@44	800	A	B
P215/60R16	94T	BSW	95885	6.0 - 7.5	8.9 on 6.5	26.0	11.0	800	1477@44	800	A	B
P215/65R16	98T	BSW	81152	6.0 - 7.5	8.7 on 6.5	26.8	11.0	776	1653@44	800	A	B
P225/60R16	97T	BSW	48852	6.0 - 8.0	9.1 on 6.5	26.5	11.0	785	1609@44	800	A	B
P235/60R16	99T	BSW	93115	6.5 - 8.5	9.5 on 7.0	26.9	11.0	773	1709@44	800	A	B
215/60R17	96T	BSW	99103	6.0 - 8.0	8.9 on 6.5	27.0	11.0	770	1565@44	800	A	B
P215/65R17	98T	BSW	01791	6.0 - 7.5	8.7 on 6.5	28.0	11.0	743	1653@44	800	A	B
P225/55R17	95T	BSW	76712	6.0 - 8.0	9.3 on 7.0	26.6	11.0	782	1521@44	800	A	B
P225/60R17	98T	BSW	29697	6.0 - 8.0	9.0 on 6.5	27.6	11.0	754	1653@44	800	A	B
P225/55R18	97T	BSW	36952	6.0 - 8.0	9.2 on 7.0	27.8	11.0	748	1609@44	800	A	B

1. The dimensions shown are average values for tires measured on specified measuring rim width. Individual tires may vary from data shown.
2. Section width varies approximately 0.2" (5mm) for every 0.5" change in rim width.

WARNING: Serious or fatal injury may result from tire failure due to underinflation or overloading. To ensure correct air pressure and vehicle load, refer to vehicle owners manual or tire information placard on the vehicle. Serious injury or death may result from explosion of tire/rim assembly due to improper mounting. Only tire professionals should mount tires, and they should never inflate beyond 40 psi to seat the beads. Before mixing types of tires in any configuration on any vehicle, be sure to check the vehicle owners manual for its recommendations.

DANGER: Never mount a 16" diameter tire on a 16.5" rim.
DANGER: Never mount a 17" diameter tire on a 17.5" rim.

Inflation pressure increase must not exceed the maximum pressure branded on the tire sidewall. When a customer requests a replacement tire with a lower speed rating than the original equipment tire, you must clearly communicate to him or her that the handling of the vehicle may be different and that its maximum speed capability is limited to that of the lowest speed-rated tire on the vehicle. Exceeding the lawful speed limit is neither recommended nor endorsed.

For high-speed driving, additional inflation pressure and possibly reduced tire loading and/or upsizing is required. In the absence of specific recommendations by the vehicle manufacturer, use the following guidelines based on those in the European Tyre and Rim Technical Organization Standards Manual.

For speeds over 160 km/h (100 mph), load and inflation must be adjusted according to the table below.

T-Speed Rated Sizes:

Maximum Speed (mph)	100	106	112	118
Inflation Increase (psi)	0	1	2	3
Load Capacity (% of max.)	100	100	100	100

PASSENGER