

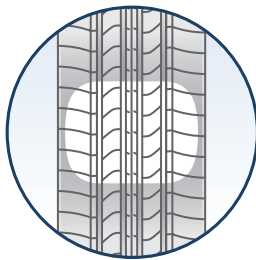


Michelin® Harmony® tires use the latest technology to help deliver a great balance of quality, features, and value in high-mileage all-season tires that are just right for passenger cars and minivans alike. Michelin Harmony tires also rate as highly capable all-season tires, thanks to their heightened level of snow traction.

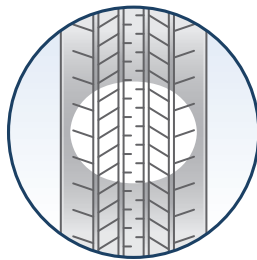
This tire carries a 80,000-mile limited warranty*
*See warranty book for details.

Get More Miles For Your Money

Harmony® tires feature MaxTouch Construction,™ a unique shape and design that allows for long-lasting, even treadwear. In fact, Harmony tires last up to 15,000 more miles versus the competition.*



With MaxTouch Construction™



Without MaxTouch Construction™

Enjoy A Quiet, Comfortable Ride

Michelin® Comfort Control Technology™ delivers one of the most comfortable rides in the industry by using computer-optimized design and precision manufacturing to offer greatly reduced vibrations and road noise.

Sure Grip In Wet And Snow

An all-weather tread pattern includes full-depth sipes for exceptional snow and wet traction that lasts throughout the entire life of the tire.

*Compared to Goodyear Assurance product line.

Size	Service Desc.	Sidewall	MSPN	Rim Width Range (inches)	Section Width on Measuring Rim Width	Overall Diameter	Tread Depth (in/32nds)	Revs/Mile at 45 mph	Max. Load Single (lbs@psi)	Treadwear	Traction	Temperature
P175/70R13	82T	BSW	04483	4.5 - 6.0	7.0 on 5.0	22.5	11.0	923	1036@44	740	A	B
P175/65R14	81S	BSW	17217	5.0 - 6.0	7.0 on 5.0	22.9	11.0	908	1019@44	740	A	B
P175/70R14	84S	BSW	35707	4.5 - 6.0	7.0 on 5.0	23.5	11.0	883	1102@44	740	A	B
P185/65R14	85S	BSW	09896	5.0 - 6.5	7.5 on 5.5	23.4	11.0	887	1124@44	740	A	B
P185/70R14	87S	BSW	67444	4.5 - 6.0	7.5 on 5.5	24.1	11.0	865	1201@44	740	A	B
P185/70R14	87S	BSW	32201	4.5 - 6.0	7.5 on 5.5	24.1	11.0	865	1201@44	740	A	B
P195/65R14	88S	BSW	30261	5.5 - 7.0	7.9 on 6.0	23.9	11.0	872	1235@44	740	A	B
P195/70R14	90S	BSW	12013	5.0 - 6.5	7.9 on 6.0	24.6	11.0	846	1312@44	740	A	B
P195/75R14	92S	BSW	22713	5.0 - 6.5	7.7 on 5.5	25.4	11.0	821	1400@35	740	A	B
P205/70R14	93S	BSW	34531	5.0 - 7.0	8.2 on 6.0	25.2	11.0	826	1433@44	740	A	B
P205/75R14	95S	BSW	04985	5.0 - 7.0	8.0 on 5.5	25.9	11.0	803	1532@35	740	A	B
P215/70R14	96S	BSW	08270	5.5 - 7.0	8.6 on 6.0	25.7	11.0	811	1554@44	740	A	B
P185/60R15	84T	BSW	35002	5.0 - 6.5	7.5 on 5.5	23.6	11.0	881	1102@44	740	A	B
P185/65R15	86T	BSW	99066	5.0 - 6.5	7.5 on 5.5	24.5	11.0	848	1168@44	740	A	B
P195/60R15	87S	BSW	83112	5.5 - 7.0	7.8 on 6.0	24.0	11.0	866	1190@44	740	A	B
P195/60R15	87T	BSW	63007	5.5 - 7.0	7.8 on 6.0	24.0	11.0	866	1190@44	740	A	B
P195/65R15	89T	BSW	14492	5.5 - 7.0	7.8 on 6.0	24.8	11.0	838	1279@44	740	A	B
P205/60R15	90S	BSW	23930	5.5 - 7.5	8.2 on 6.0	24.5	11.0	847	1301@44	740	A	B
P205/65R15	92T	BSW	83556	5.5 - 7.5	8.3 on 6.0	25.4	11.0	821	1400@44	740	A	B
P205/70R15	95T	BSW	23967	5.0 - 7.0	8.2 on 6.0	26.1	11.0	796	1499@44	740	A	B
P205/75R15	97S	BSW	06164	5.0 - 7.0	8.0 on 5.5	26.9	11.0	773	1598@35	740	A	B
P215/60R15	93S	BSW	91633	6.0 - 7.5	8.8 on 6.5	25.0	11.0	832	1411@44	740	A	B
P215/60R15	93T	BSW	35085	6.0 - 7.5	8.8 on 6.5	25.0	11.0	832	1411@44	740	A	B
P215/65R15	95S	BSW	10278	6.0 - 7.5	8.6 on 6.5	25.9	11.0	803	1510@44	740	A	B
P215/70R15	97T	BSW	29325	5.5 - 7.0	8.6 on 6.5	26.6	11.0	780	1620@44	740	A	B
P205/55R16	89S	BSW	96051	5.5 - 7.5	8.3 on 6.5	24.8	11.0	839	1279@44	740	A	B
P205/55R16	89T	BSW	04293	5.5 - 7.5	8.3 on 6.5	24.8	11.0	839	1279@44	740	A	B
P205/60R16	91T	BSW	25281	5.5 - 7.5	8.4 on 6.0	25.6	11.0	813	1356@44	740	A	B
P215/60R16	94S	BSW	74913	6.0 - 7.5	8.8 on 6.5	26.0	11.0	800	1477@44	740	A	B
P215/60R16	94T	BSW	05732	6.0 - 7.5	8.8 on 6.5	26.0	11.0	800	1477@44	740	A	B
P215/65R16	98T	BSW	32229	6.0 - 7.5	8.7 on 6.5	26.8	11.0	775	1653@44	740	A	B
P225/60R16	97T	BSW	24403	6.0 - 8.0	8.8 on 6.5	26.4	11.0	787	1609@44	740	A	B

- The dimensions shown are average values for tires measured on specified measuring rim width. Individual tires may vary from data shown.
- Section width varies approximately 0.2" (5mm) for every 0.5" change in rim width.

WARNING: Serious or fatal injury may result from tire failure due to underinflation or overloading. To ensure correct air pressure and vehicle load, refer to vehicle owners manual or tire information placard on the vehicle. Serious injury or death may result from explosion of tire/rim assembly due to improper mounting. Only tire professionals should mount tires, and they should never inflate beyond 40 psi to seat the beads. Before mixing types of tires in any configuration on any vehicle, be sure to check the vehicle owners manual for its recommendations.

DANGER: Never mount a 16" diameter tire on a 16.5" rim.

Inflation pressure increase must not exceed the maximum pressure branded on the tire sidewall. When a customer requests a replacement tire with a lower speed rating than the original equipment tire, you must clearly communicate to him or her that the handling of the vehicle may be different and that its maximum speed capability is limited to that of the lowest speed-rated tire on the vehicle. Exceeding the lawful speed limit is neither recommended nor endorsed.

For high-speed driving, additional inflation pressure and possibly reduced tire loading and/or upsizing is required. In the absence of specific recommendations by the vehicle manufacturer, use the following guidelines based on those in the European Tyre and Rim Technical Organization Standards Manual.

For speeds over 160 km/h (100 mph), load and inflation must be adjusted according to the table below.

S-Speed Rated Sizes:

Maximum Speed (mph)	100	106	112
Inflation Increase (psi)	0	1	2
Load Capacity (% of max.)	100	100	100

T-Speed Rated Sizes:

Maximum Speed (mph)	100	106	112	118
Inflation Increase (psi)	0	1	2	3
Load Capacity (% of max.)	100	100	100	100

PASSENGER

