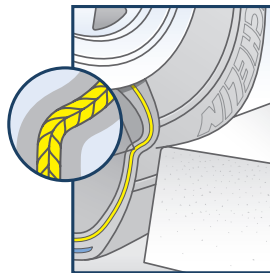


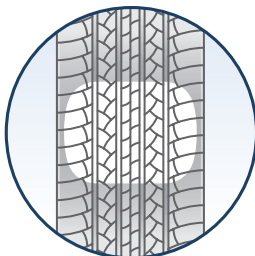
Michelin® Cross Terrain® SUV



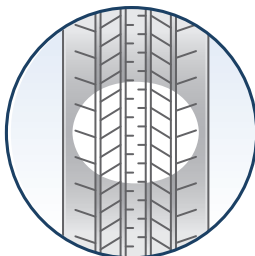
Michelin® Cross Terrain® SUV tires have been specifically designed for SUV owners who want the highest level of on-road comfort and handling, while still maintaining the all-season capability; durability; and rugged, truck-like styling of their SUVs.



DuraGuard Technology™



With MaxTouch Construction™



Without MaxTouch Construction™

Enjoy A Quiet, Comfortable Ride

Michelin® Comfort Control Technology™ helps deliver one of the most comfortable rides in the industry by using a computer-optimized design and precision manufacturing to offer greatly reduced vibrations and road noise.

Handle Curbs And Potholes

DuraGuard Technology™ uses two belts made of steel that are 40% stronger than the competition* and two sidewall plies for greater durability and protection against common road hazards.

Get More Miles With Each Tank Of Gas†

The Cross Terrain SUV tire's MaxTouch Construction™ features a unique shape for long-lasting, even wear.

*Compared to the leading competitor: Bridgestone® Dueler™ H/L Alenza™

†Compared to Bridgestone Dueler™ H/L Alenza and Goodyear Fortera Silent Armor.

| Size | Service Desc. | Sidewall | MSPN | Rim Width Range (inches) | Section Width on Measuring Rim Width | Overall Diameter | Tread Depth (in/32nds) | Revs/Mile at 45 mph | Max. Load Single (lbs/psi) | Treadwear | Traction | Temperature | Original Equipment |
|---------------|---------------|----------|-------|--------------------------|--------------------------------------|------------------|------------------------|---------------------|----------------------------|-----------|----------|-------------|--------------------|
| P225/70R15 | 100S | ORWL | 49565 | 6.0 - 7.5 | 9.0 on 6.5 | 27.5 | 11.5 | 756 | 1594@35* | 700 | A | B | |
| P225/75R15 | 102S | ORWL | 77587 | 6.0 - 7.5 | 8.9 on 6.0 | 28.2 | 11.5 | 742 | 1704@35* | 700 | A | B | |
| P235/70R15 | 102S | ORWL | 60547 | 6.0 - 8.0 | 9.5 on 7.0 | 28.0 | 11.5 | 743 | 1724@35* | 700 | A | B | |
| P235/75R15 | 105S | ORWL | 73546 | 6.0 - 8.0 | 9.4 on 6.5 | 28.8 | 11.5 | 726 | 1844@35* | 700 | A | B | |
| P265/70R15 | 110S | ORBL | 96459 | 7.0 - 9.0 | 10.7 on 8.0 | 29.7 | 11.5 | 700 | 2125@35* | 700 | A | B | |
| P225/70R16 | 101S | ORWL | 75883 | 6.0 - 7.5 | 9.0 on 6.5 | 28.3 | 11.5 | 741 | 1654@35* | 700 | A | B | |
| P225/75R16 | 104S | ORWL | 48514 | 6.0 - 7.5 | 8.8 on 6.0 | 29.3 | 11.5 | 710 | 1804@35* | 700 | A | B | |
| P235/70R16 DT | 104S | ORBL | 69729 | 6.0 - 8.0 | 9.5 on 7.0 | 29.0 | 10.0 | 720 | 1804@44* | 420 | A | B | F |
| P235/70R16 | 104S | ORBL | 46254 | 6.0 - 8.0 | 9.5 on 7.0 | 29.1 | 11.0 | 712 | 1804@44* | 420 | A | B | F |
| P235/70R16 DT | 104S | ORWL | 17421 | 6.0 - 8.0 | 9.5 on 7.0 | 29.0 | 10.0 | 720 | 1804@44* | 420 | A | B | F |
| P235/70R16 | 104S | ORWL | 79176 | 6.0 - 8.0 | 9.5 on 7.0 | 29.1 | 11.0 | 712 | 1804@44* | 420 | A | B | F |
| P245/70R16 | 106H | ORBL | 84775 | 6.5 - 8.0 | 9.5 on 7.0 | 29.2 | 11.0 | 713 | 1904@35* | 420 | A | B | K |
| P245/70R16 | 106S | ORWL | 97768 | 6.5 - 8.0 | 9.7 on 7.0 | 29.5 | 11.5 | 709 | 1904@35* | 700 | A | B | |
| P245/75R16 | 109S | ORWL | 89325 | 6.5 - 8.0 | 9.7 on 7.0 | 30.2 | 11.5 | 691 | 2065@35* | 700 | A | B | |
| P255/70R16 | 109S | ORWL | 67119 | 6.5 - 8.5 | 10.2 on 7.5 | 30.2 | 11.5 | 693 | 2065@35* | 700 | A | B | |
| P265/70R16 | 111S | ORBL | 89438 | 7.0 - 9.0 | 9.9 on 7.0 | 30.4 | 11.0 | 689 | 2185@35* | 420 | A | B | T |
| P265/70R16 | 111S | ORBL | 56411 | 7.0 - 9.0 | 10.8 on 8.0 | 30.6 | 11.5 | 680 | 2185@35* | 700 | A | B | |
| P265/70R16 | 111S | ORWL | 64353 | 7.0 - 9.0 | 10.8 on 8.0 | 30.6 | 11.5 | 680 | 2185@35* | 700 | A | B | |
| P265/75R16 | 114S | ORWL | 89355 | 7.0 - 9.0 | 10.5 on 7.5 | 31.7 | 11.5 | 656 | 2365@35* | 700 | A | B | |
| P275/70R16 | 114S | ORBL | 57546 | 7.0 - 9.0 | 11.0 on 8.0 | 31.2 | 11.5 | 667 | 2365@35* | 700 | A | B | |
| P235/65R17 DT | 103T | ORBL | 95648 | 6.5 - 8.5 | 9.0 on 6.5 | 28.9 | 11.0 | 726 | 1754@35* | 420 | A | B | AC |
| P245/65R17 | 105S | ORBL | 87242 | 7.0 - 8.5 | 9.6 on 7.0 | 29.6 | 11.0 | 702 | 1854@35* | 420 | A | B | GM |
| P255/60R17 | 105S | ORBL | 65887 | 7.0 - 9.0 | 10.2 on 7.5 | 29.1 | 10.5 | 711 | 1854@35* | 420 | A | B | GM |
| P255/75R17 | 113S | ORBL | 42718 | 6.5 - 8.5 | 10.1 on 7.0 | 32.1 | 11.5 | 648 | 2305@44* | 700 | A | B | |
| P265/65R17 | 110S | ORBL | 55332 | 7.5 - 9.5 | 10.4 on 8.0 | 30.7 | 12.0 | 682 | 2125@35* | 420 | A | B | L, T |
| P265/70R17 | 113H | ORBL | 60704 | 7.0 - 9.0 | 10.7 on 8.0 | 31.7 | 11.0 | 656 | 2305@35* | 520 | A | A | |
| P265/70R17 | 113S | ORBL | 61797 | 7.0 - 9.0 | 10.7 on 8.0 | 31.9 | 12.0 | 652 | 2305@35* | 420 | A | B | GM |
| P265/70R17 | 113S | ORWL | 61677 | 7.0 - 9.0 | 10.7 on 8.0 | 31.9 | 12.0 | 652 | 2305@35* | 700 | A | B | |
| 275/55R17 | 109H | ORBL | 48296 | 7.5 - 9.5 | 11.2 on 8.5 | 28.9 | 11.0 | 720 | 2065@44* | 520 | A | A | |
| P275/60R17 | 110H | ORBL | 47206 | 7.5 - 9.5 | 11.0 on 8.0 | 30.0 | 11.0 | 693 | 2125@35* | 520 | A | A | |
| P275/60R17 | 110S | ORWL | 88696 | 7.5 - 9.5 | 11.0 on 8.0 | 30.0 | 11.5 | 693 | 2125@35* | 700 | A | B | |
| P275/65R17 | 113S | ORBL | 95496 | 7.5 - 9.5 | 10.6 on 8.0 | 30.9 | 11.5 | 679 | 2305@35* | 420 | A | B | |
| P235/65R18 | 104S | ORBL | 61121 | 6.5 - 8.5 | 9.5 on 7.5 | 30.0 | 11.0 | 692 | 1804@44* | 420 | A | A | F |
| P235/65R18 | 104S | ORWL | 51880 | 6.5 - 8.5 | 9.5 on 7.5 | 30.0 | 11.0 | 692 | 1804@44* | 420 | A | A | F |
| P255/70R18 | 112S | ORBL | 84379 | 6.5 - 8.5 | 10.2 on 7.5 | 32.2 | 12.0 | 643 | 2245@44* | 420 | A | B | F |
| P265/60R18 | 109H | ORBL | 35926 | 7.0 - 9.5 | 10.7 on 8.0 | 30.51 | 11.0 | 687 | 2271@44 | 420 | A | B | T |
| P265/70R18 | 114S | ORBL | 95566 | 7.0 - 9.0 | 10.8 on 8.0 | 32.6 | 11.5 | 638 | 2365@44* | 700 | A | B | |
| P275/55R18 | 109S | ORBL | 61247 | 7.5 - 9.5 | 10.5 on 7.5 | 30.1 | 11.5 | 691 | 2271@44* | 420 | A | B | F, T |

Original Equipment Key: AC = Acura, F = Ford, GM = General Motors, K = Kia, L = Lexus, T = Toyota
 XL = Extra Load, DT = Different Tread Design

* Passenger sizes used in Light Truck/SUV applications have reduced load capacity. This will differ from the maximum load branded on the tire sidewall.

Government UTQG Ratings do not apply to light truck-sized tires.

- The dimensions shown are average values for tires measured on specified measuring rim width. Individual tires may vary from data shown.
- Section width varies approximately 0.2" (5mm) for every 0.5" change in rim width.

WARNING: Serious or fatal injury may result from tire failure due to underinflation or overloading. To ensure correct air pressure and vehicle load, refer to vehicle owners manual or tire information placard on the vehicle. Serious injury or death may result from explosion of tire/rim assembly due to improper mounting. Only tire professionals should mount tires, and they should never inflate beyond 40 psi to seat the beads. Before mixing types of tires in any configuration on any vehicle, be sure to check the vehicle owners manual for its recommendations.

DANGER: Never mount a 16" diameter tire on a 16.5" rim.
 DANGER: Never mount a 17" diameter tire on a 17.5" rim.

Inflation pressure increase must not exceed the maximum pressure branded on the tire sidewall. When a customer requests a replacement tire with a lower speed rating than the original equipment tire, you must clearly communicate to him or her that the handling of the vehicle may be different and that its maximum speed capability is limited to that of the lowest speed-rated tire on the vehicle. Exceeding the lawful speed limit is neither recommended nor endorsed.

For high-speed driving additional inflation pressure and possibly reduced tire loading and/or upsizing is required. In the absence of specific recommendations by the vehicle manufacturer, use the following guidelines based on those in the European Tyre and Rim Technical Organization Standards Manual.

For speeds over 160 km/h (100 mph), load and inflation must be adjusted according to the table below.

S-Speed Rated Sizes:

| | | | |
|---------------------------|-----|-----|-----|
| Maximum Speed (mph) | 100 | 106 | 112 |
| Inflation Increase (psi) | 0 | 1 | 2 |
| Load Capacity (% of max.) | 100 | 100 | 100 |

H-Speed Rated Sizes:

| | | | | | | |
|---------------------------|-----|-----|-----|-----|-----|-----|
| Maximum Speed (mph) | 100 | 106 | 112 | 118 | 124 | 130 |
| Inflation Increase (psi) | 0 | 1 | 2 | 3 | 4 | 5 |
| Load Capacity (% of max.) | 100 | 100 | 100 | 100 | 100 | 100 |

T-Speed Rated Sizes:

| | | | | |
|---------------------------|-----|-----|-----|-----|
| Maximum Speed (mph) | 100 | 106 | 112 | 118 |
| Inflation Increase (psi) | 0 | 1 | 2 | 3 |
| Load Capacity (% of max.) | 100 | 100 | 100 | 100 |

